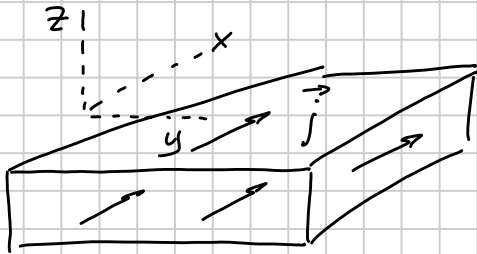


# Homework 6

Note Title

2/13/2008

① Infinite slab of thickness  $2a$  is



carrying a homogeneous current density  $\vec{j} = (j, 0, 0)$

Find magnetic field inside and outside the slab.

[3 points]

② Find magnetic field at a distance  $d$  from a wire bent like shown in the picture and carrying current  $I$ .



[3 points]

③ Problem 5.9 (page 219). [4 points]